

## DAFTAR PUSTAKA

- Azmeri, dan I. Satria, An Urban Flood Inundation and Damage Assesment for Disaster Risk Reduction in Johan Pahlawan Sub District, West Aceh Regency, *IOP Conf. Ser.:Earth Environ. Sci.*630 012009.
- Diah Ayu Kusumadewi, Ludfi Djakfar, Moh. Bisri (2012). “*Analisa Hidrologi dan Hidrolika Saluran Drainase Box Culvert Jalan Antasari Bandar Lampung Menggunakan Program HEC-RAS*”.
- Hamsar, H. (2002). *Drainase Perkotaan*. Yogyakarta: Yogyakarta.
- Istiarto. *Modul Pelatihan Simulasi Aliran 1 Dimensi Dengan Bantuan Paker Pemrograman Hidrodinamika HEC-RAS*. Yogyakarta: UGM, 2014.
- Muhammad Khoirul Mahfidh, Fatchur Roehman, Kartono Wibowo (2022). “*Analisa Kapasitas Saluran Drainase Pada Jalan Raya Kelet – Bangsri*”
- Riyo Ardi Yansyah, Dyah Indriana Kusumastuti, Subuh Tugiono (2015). “*Analisa Hidrologi dan Hidrolika Saluran Drainase Box Culvert Jalan Antasari Bandar Lampung Menggunakan Program HEC-RAS*”.
- Rossi Eka Mayasari, Djoni Irianto(2016). “*Analisa Penanggulangan Banjir Pada Sistem Drainase DAS Sidokare Kabupaten Sidoarjo Dengan Menggunakan HEC-RAS*”.
- Suripin, 2004. *Sistem Drainase Perkotaan yang Bekelanjutan*. Andi Offset, Yogyakarta.
- Teguh Haris Santoso, ST, MT (2020). “*Redesain Bendung Di Raja Bawah Menggunakan Metode Bendung Tyrol*”
- Triatmodjo Bambang, 2008b. *Hidrolika II*. Beta Offset, Yogyakarta

Wigati, Restu, Soedarsono, Ananda. Yusi (2018). “ *Analisis Banjir Menggunakan Software HEC-RAS 4.1(Studi Kasus sub DAS Ciujung Hulu HM 0+00 Sampai Dengan HM 45+00)*”.

Wesli, (2008). “*Drainase Perkotaan*”. Yogyakarta: Graha Ilmu.

## LAMPIRAN

Lampiran 1 Tabel Nilai  $K\tau$  Untuk Distribusi Log-Pearson III

Koef G	Kala Ulang ( Tahun )							
	1.01	2	5	10	25	50	100	200
3.0	-0.667	-0.396	0.420	1.180	2.278	3.152	4.051	4.970
2.9	-0.690	-0.390	0.440	1.195	2.227	3.134	4.013	4.904
2.8	-0.714	-0.384	0.460	1.210	2.275	3.114	3.973	4.847
2.7	-0.740	-0.376	0.479	1.224	2.272	3.093	3.923	4.783
2.6	-0.769	-0.368	0.499	1.238	2.267	3.071	3.889	4.718
2.5	-0.799	-0.360	0.518	1.250	2.262	3.048	3.845	4.652
2.4	-0.832	-0.351	0.537	1.262	2.256	3.023	3.800	4.584
2.3	-0.867	-0.341	0.555	1.274	2.248	2.997	3.753	4.515
2.2	-0.905	-0.330	0.574	1.284	2.240	2.970	3.705	4.444
2.1	-0.946	-0.319	0.592	1.294	2.230	2.942	3.656	4.372
2.0	-0.990	-0.307	0.609	1.302	2.219	2.912	3.605	4.298
1.9	-1.037	-0.294	0.627	1.310	2.207	2.881	3.533	4.223
1.8	-1.087	-0.282	0.643	1.318	2.193	2.848	3.499	4.147
1.7	-1.140	-0.268	0.660	1.324	2.179	2.815	3.444	4.069
1.6	-1.197	-0.254	0.675	1.329	2.163	2.780	3.388	3.990
1.5	-1.256	-0.240	0.690	1.333	2.146	2.743	3.330	3.910
1.4	-1.318	-0.225	0.705	1.337	2.128	2.706	3.271	3.828
1.3	-1.383	-0.210	0.719	1.339	2.108	2.666	3.211	3.745
1.2	-1.449	-0.195	0.732	1.340	2.087	2.626	3.149	3.661
1.1	-1.518	-0.180	0.745	1.341	2.066	2.585	3.087	3.575
1.0	-1.588	-0.164	0.758	1.340	2.043	2.542	3.022	3.489
0.9	-1.660	-0.148	0.769	1.339	2.018	2.498	2.957	3.401
0.8	-1.733	-0.132	0.780	1.336	1.993	2.453	2.891	3.312
0.7	-1.806	-0.116	0.790	1.333	1.967	2.407	2.824	3.223
0.6	-1.880	-0.099	0.800	1.328	1.939	2.359	2.755	3.132
0.5	-1.955	-0.083	0.808	1.323	1.910	2.231	2.686	3.041
0.4	-2.029	-0.066	0.816	1.317	1.880	2.261	2.615	2.949
0.3	-2.104	-0.050	0.824	1.309	1.849	2.231	2.544	2.856
0.2	-2.178	-0.033	0.830	1.301	1.818	2.211	2.472	2.763
0.1	-2.252	<b>-0.017</b>	<b>0.836</b>	<b>1.292</b>	<b>1.785</b>	2.159	2.400	2.670

0.0	-2.326	0.0	0.842	1.282	1.751	2.107	2.326	2.576
-0.1	-2.400	0.017	0.846	1.270	1.716	2.000	2.252	2.482
-0.2	-2.472	0.033	0.850	1.258	1.680	1.945	2.178	2.388
-0.3	-2.544	0.050	0.853	1.245	1.643	1.890	2.104	2.294
-0.4	-2.615	0.066	0.855	1.231	1.606	1.834	2.029	2.201
-0.5	-2.686	0.083	0.856	1.216	1.567	1.777	2.029	2.108
-0.6	-2.755	0.099	0.857	1.200	1.528	1.720	1.955	2.016
-0.7	-2.824	0.116	0.857	1.183	1.488	1.663	1.880	1.926
-0.8	-2.891	0.132	0.856	1.166	1.448	1.606	1.733	1.837
-0.9	-2.957	0.148	0.854	1.147	1.407	1.549	1.660	1.749
-1.0	-3.022	0.164	0.852	1.128	1.366	1.492	1.588	1.664
-1.1	-3.087	0.180	0.848	1.107	1.324	1.435	1.518	1.581
-1.2	-3.149	0.195	0.844	1.086	1.282	1.379	1.449	1.501
-1.3	-3.211	0.210	0.838	1.064	1.240	1.324	1.383	1.424
-1.4	-3.271	0.225	0.832	1.041	1.198	1.270	1.318	1.351
-1.5	-3.330	0.240	0.825	1.081	1.157	1.217	1.256	1.282
-1.6	-3.388	0.254	0.817	0.994	1.116	1.166	1.197	1.216
-1.7	-3.444	0.268	0.808	0.970	1.075	1.116	1.140	1.155
-1.8	-3.499	0.282	0.799	0.945	1.035	1.069	1.087	1.097
-1.9	-3.553	0.294	0.788	0.920	0.996	1.023	1.037	1.044
-2.0	-3.065	0.307	0.777	0.895	0.959	0.98	0.990	0.995
-2.1	-3.656	0.319	0.765	0.869	0.923	0.939	0.946	0.949
-2.2	-3.705	0.330	0.752	0.844	0.888	0.900	0.905	0.907
-2.3	-3.753	0.341	0.739	0.819	0.855	0.864	0.867	0.869
-2.4	-3.8	0.351	0.725	0.795	0.823	0.830	0.832	0.833
-2.5	-3.845	0.360	0.711	0.771	0.793	0.798	0.799	0.800
-2.6	-3.889	0.368	0.696	0.747	0.764	0.768	0.769	0.769
-2.7	-3.932	0.376	0.681	0.724	0.738	0.74	0.74	0.741
-2.8	-3.973	0.384	0.666	0.702	0.712	0.714	0.714	0.714
-2.9	-4.013	0.390	0.651	0.681	0.683	0.689	0.690	0.690
-3.0	-4.051	0.396	0.636	0.660	0.666	0.666	0.667	0.667

Sumber : Wesli,

Lampiran 2 Tabel Koefisien Nilai Kekasaran Manning

Tipe Saluran	Koefisien Manning (n)
Baja	0,011 – 0.014
Baja permukaan gelombang	0,021 – 0,030
<b>Semen</b>	<b>0,010 – 0,013</b>
<b>Beton</b>	<b>0,011 – 0,015</b>
Pasangan Batu	0,017 – 0,030
Kayu	0,010 – 0,014
Bata	0,011 – 0,015
Aspal	0,130

Lampiran 3 Tabel Total Debit Kala Ulang

T	Debit Banjir Rancangan (m <sup>3</sup> /s)
	Metode Rasional
2	0,15
5	0,29
10	0,32
25	0,35

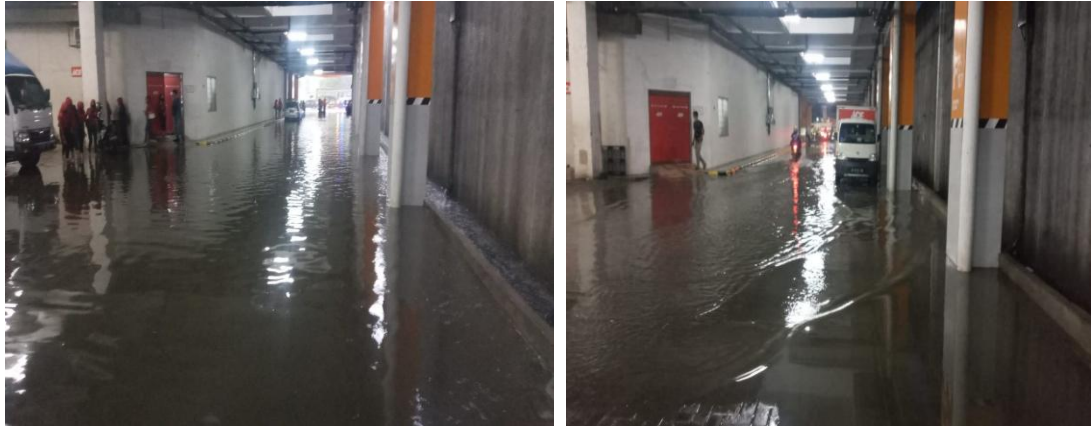
Lampiran 4 Tabel Nilai Chi Kuadrat

Pr df	0.25	0.10	0.05	0.010	0.005	0.001
1	1.32330	2.70554	3.84146	6.63490	7.87944	10.82757
2	2.77259	4.60517	5.99146	9.21034	10.59663	13.81551
3	4.10834	6.25139	7.81473	11.34487	12.83816	16.26624
4	5.38527	7.77944	9.48773	13.27670	14.86026	18.46683
5	6.62568	9.23636	11.07050	15.08627	16.74960	20.51501
6	7.84080	10.64464	12.59159	16.81189	18.54758	22.45774
7	9.03715	12.01704	14.06714	18.47531	20.27774	24.32189
8	10.21885	13.36157	15.50731	20.09024	21.95495	26.12448
9	11.38875	14.68366	16.91898	21.66599	23.58935	27.87716
10	12.54886	15.98718	18.30704	23.20925	25.18818	29.58830
11	13.70069	17.27501	19.67514	24.72497	26.75685	31.26413
12	14.84540	18.54935	21.02607	26.21697	28.29952	32.90949
13	15.98391	19.81193	22.36203	27.68825	29.81947	34.52818
14	17.11693	21.06414	23.68479	29.14124	31.31935	36.12327
15	18.24509	22.30713	24.99579	30.57791	32.80132	37.69730
16	19.36886	23.54183	26.29623	31.99993	34.26719	39.25235
17	20.48868	24.76904	27.58711	33.40866	35.71847	40.79022
18	21.60489	25.98942	28.86930	34.80531	37.15645	42.31240
19	22.71781	27.20357	30.14353	36.19087	38.58226	43.82020
20	23.82769	28.41198	31.41043	37.56623	39.99685	45.31475
21	24.93478	29.61509	32.67057	38.93217	41.40106	46.79704
22	26.03927	30.81328	33.92444	40.28936	42.79565	48.26794
23	27.14134	32.00690	35.17246	41.63840	44.18128	49.72823
24	28.24115	33.19624	36.41503	42.97982	45.55851	51.17860
25	29.33885	34.38159	37.65248	44.31410	46.92789	52.61966
26	30.43457	35.56317	38.88514	45.64168	48.28988	54.05196
27	31.52841	36.74122	40.11327	46.96294	49.64492	55.47602
28	32.62049	37.91592	41.33714	48.27824	50.99338	56.89229
29	33.71091	39.08747	42.55697	49.58788	52.33562	58.30117
30	34.79974	40.25602	43.77297	50.89218	53.67196	59.70306
31	35.88708	41.42174	44.98534	52.19139	55.00270	61.09831
32	36.97298	42.58475	46.19426	53.48577	56.32811	62.48722
33	38.05753	43.74518	47.39988	54.77554	57.64845	63.87010
34	39.14078	44.90316	48.60237	56.06091	58.96393	65.24722
35	40.22279	46.05879	49.80185	57.34207	60.27477	66.61883
36	41.30362	47.21217	50.99846	58.61921	61.58118	67.98517

37	42.38331	48.36341	52.19232	59.89250	62.88334	69.34645
38	43.46191	49.51258	53.38354	61.16209	64.18141	70.70289
39	44.53946	50.65977	54.57223	62.42812	65.47557	72.05466
40	45.61601	51.80506	55.75848	63.69074	66.76596	73.40196
41	46.69160	52.94851	56.94239	64.95007	68.05273	74.74494
42	47.76625	54.09020	58.12404	66.20624	69.33600	76.08376
43	48.84001	55.23019	59.30351	67.45935	70.61590	77.41858
44	49.91290	56.36854	60.48089	68.70951	71.89255	78.74952
45	50.98495	57.50530	61.65623	69.95683	73.16606	80.07673
46	52.05619	58.64054	62.82962	71.20140	74.43654	81.40033
47	53.12666	59.77429	64.00111	72.44331	75.70407	82.72042
48	54.19636	60.90661	65.17077	73.68264	76.96877	84.03713
49	55.26534	62.03754	66.33865	74.91947	78.23071	85.35056
50	56.33360	63.16712	67.50481	76.15389	79.48998	86.66082



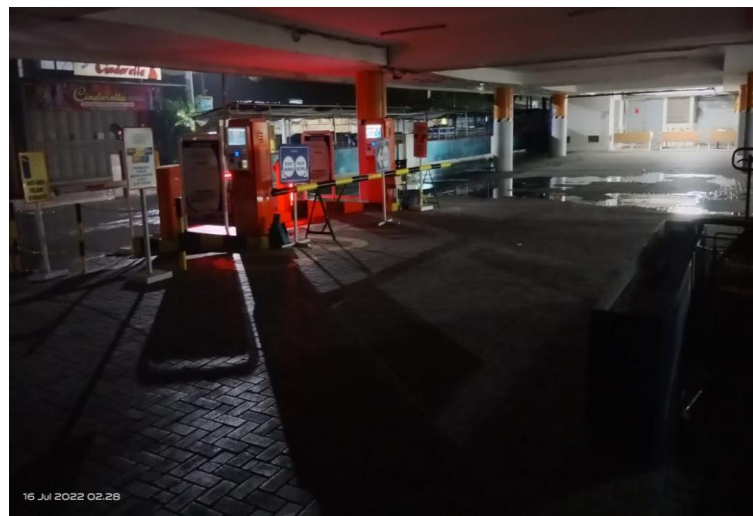
Sumber : Dokumentasi pribadi banjir dilorong jalan Mayjend Sutoyo



Sumber : Dokumentasi pribadi banjir dilorong jalan Mayjend Sutoyo



Sumber : Dokumentasi pribadi banjir dijalan Kapten Sudibyo



Sumber : Dokumentasi pribadi banjir dijalan Jalak Barat





Sumber : Dokumentasi Drainase Eksisting

